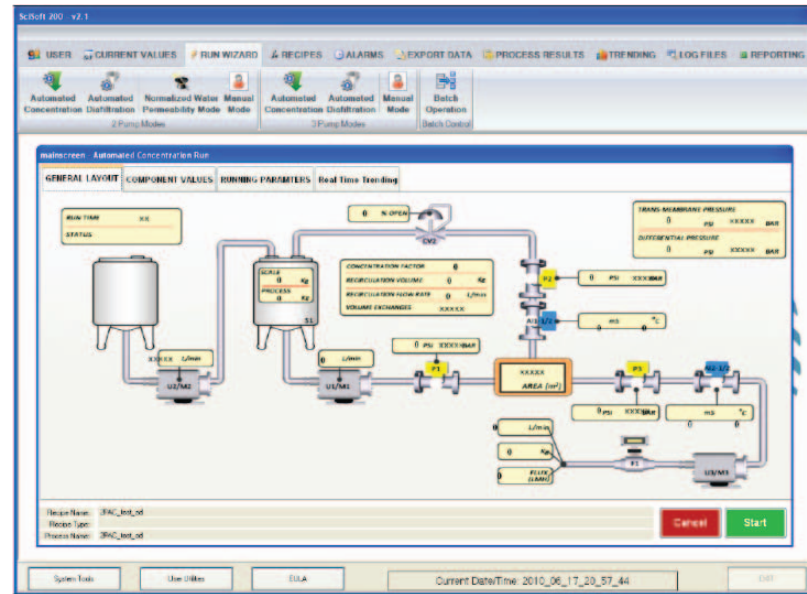


# Automation Software

## SciLog SciSoft Control Software



- Intuitive, User Friendly Interface
- Five User Operation Modes
- Recipe Creation Tool and Batch Wizard
- User Definable Alarm Setpoints & Limits
- User Definable Data Trending
- User Definable Batch Reporting
- User Accounts Templates
- User Selectable Permission Levels
- Designed For 21 CFR Part 11 Compliance
- OPC Connectivity Options
- Historical Access (Realtime or HDA)
- SCADA or DCS

### System Specifications:

**Physical Size:** 48.5" L x 30" W x 48" H (123.1cm L x 76.2cm W x 121.9cm H)  
**Footprint:** 30" x 50" (76.2cm x 127cm)  
**Power:** 208VAC 1/3 Ph 40/25 Amps, 480VAC 3Ph 15 Amps  
**Other Utilities:** Compressed Air, Nitrogen @ 35 PSI  
**OPCDA 2.0 Communications**



## SciPure® 200 Single-Use

TFF Automation you want...  
 GMP Benefits you need

### SciPure Automated Bio-Purification Platform

- *Pre-Calibrated, Single-Use UF/DF/MF Manifold*
- *Comprehensive Continuous Real-Time Data Acquisition & Trending Capabilities*
- *Yield Optimization Through Patented TMP Control*
- *Simultaneous Flow Rate & Pressure Control*
- *Proven, Reliable Performance in GMP Applications*
- *Scalable: Lab → Pilot Plant → Production*



[SciLog.com/SciPure](http://SciLog.com/SciPure)



8845 South Greenview Dr., Suite 4  
 Middleton, WI 53562  
 p: 800.955.1993  
 608.824.0500  
 f: 608.824.0509

[SciLog.com/SciPure](http://SciLog.com/SciPure)

# SciPure® 200 Flexible TFF Purification Platform

## SciLog Single-Use Manifold Includes:

- Aseptic, Closed-Loop Solution Access
- Integrated Sensors: Pressure, Temperature & Conductivity
- Pinch valves & fluid ports allow for Aseptic Access to media buffers & retentate.
- TMP control via Proportional Pinch Valve
- Unique design allows for No Product Contact


## Automated Control Capabilities:

- Patented Trans-membrane Pressure (TMP) Control
  - TMP Set Point Control
  - TMP Scan Control
- Feed Pump Rate (FPR) Control
  - FPR Set Point Control
  - FPR Scan Control
- Discrete Processing or Batch Control
- Constant Feedrate & TMP or Permeate Flow Control

Part Number	Inlet Flow Range (L/min)	Mass Pressure (psi)	Hold Up Volume	Recommended Filter Area (m <sup>2</sup> )	Permeate Flow Control	Single-Use Flow Path
900-200-7	0.25 - 8	60	< 500 mL	0.1 - 1.5	Optional	Yes
900-200-7 HF	0.5 - 16	60	< 500 mL	0.1- 2.5 (5)	Optional	Yes
900-200-8	1 - 20	30	< 500 mL	0.1- 2.5 (5)	Optional	Yes
900-200-8 HF	1 - 40	30	< 500 mL	1 - 5	Optional	Yes


Proportional Pinch Valve For Automated TMP Control

Pre-Calibrated, Single-Use Sensors



SciPres®    SciTemp®    SciCon®

Permeate Pump



Permeate Flow Control For Microfiltration Applications

10" Stack Light Indicator For Process Status


Industrial Display




19" Color Display Touchscreen HMI & PC Controller

Designed For Filter Flexibility

Accommodates GE, Millipore, Pall & Sartorius Filters



Two Peristaltic Pump Heads

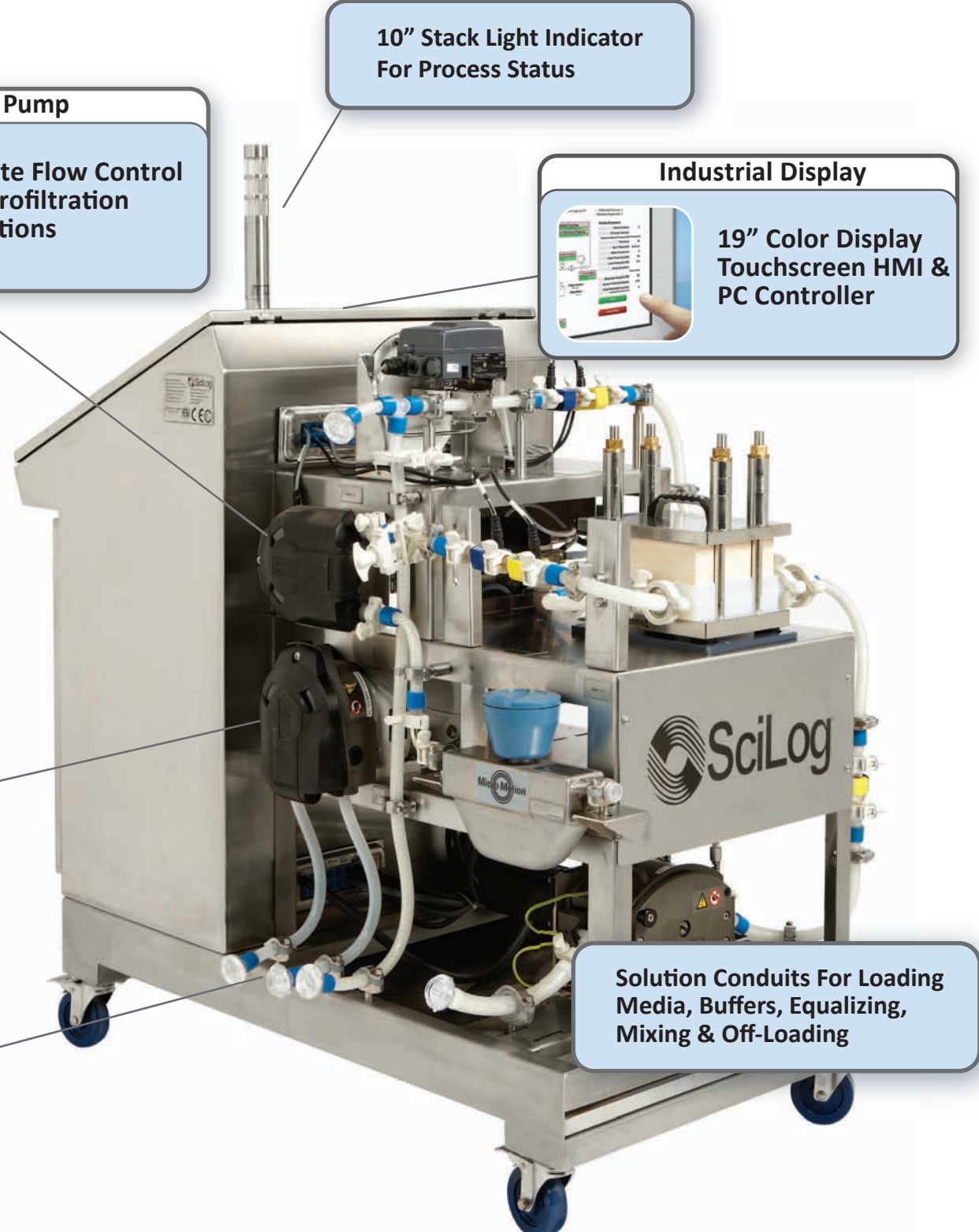


Diafiltration & Aux Loading Pump Feed & Solution Handling Pump

Two Automated Valving Systems



Allows Access To Process, Auxiliary Media & Off Loading With GE ReadyMate Aseptic Ports.



Solution Conduits For Loading Media, Buffers, Equalizing, Mixing & Off-Loading